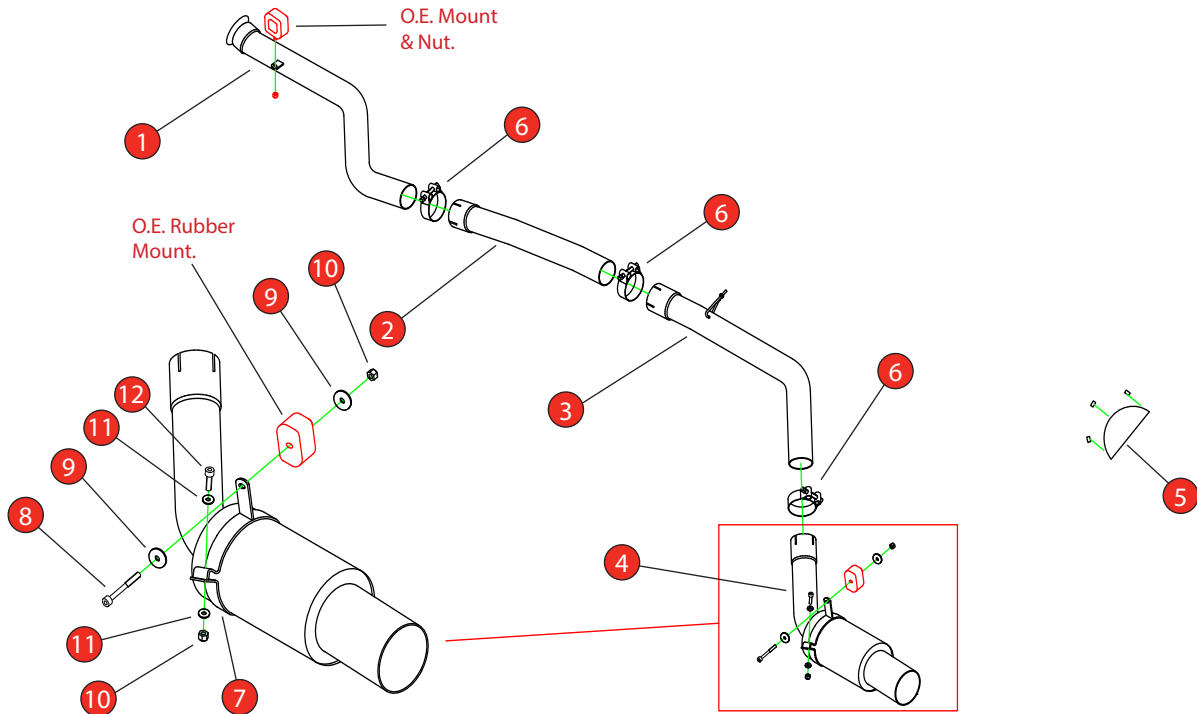


<b>Car</b>	Toyota Supra A90 3.0T GPF Models	<b>Part No.</b>	STYS010
<b>Year</b>	2019-Current	<b>Fit Kits</b>	462FK
<b>Notes</b>	Where not supplied use original fittings	<b>Features</b>	Pipe Diameter:- 80mm

Estimated Fitting Time: 90 Minutes



NO.	PART NO.	DESCRIPTION	QTY
1	064TY	80mm Front Pipe	1
2	065TY	80mm Centre Link Pipe	1
3	066TY	80mm Rear Link Pipe	1
4	067TY	80mm Rear Silencer	1
5	070TY	Exhaust Cutout Cover Kit	1
<b>Fit Kit: 462FK</b>			
6	Z016.10069	79mm - 85mm H/D Clamp	3
7	Z028.20435	Silencer Strap	1
8	Z017.12803	M8 x 50mm Caphead Screw	1
9	Z017.10825	M8 x 25mm Washer	2
10	Z017.10062	M8 Nyloc Nut	2
11	Z017.10831	M8 x 17mm Washer	2
12	Z017.10074	M8 x 30 Caphead Screw	1

DATE	21/06/2024
ISSUE	00
AUTHORISED	G O'Shea

**NOTE:** ENSURE SCORPION SYSTEM IS CLEAR OF MOVING PARTS AND ALL ORIGINAL FUNCTIONS WORK CORRECTLY.



STAY CONNECTED TO RED POWER.

<b>Car</b>	Toyota Supra A90 3.0T GPF Models	<b>Part No.</b>	STYS010
<b>Year</b>	2019-Current	<b>Fit Kits</b>	462FK
<b>Notes</b>	Where not supplied use original fittings.	<b>Features</b>	Pipe Diameter:- 80mm

Estimated Fitting Time: 90 Minutes



The rear bumper requires trimming for the L/H outlet. The red line on the 1st image indicates the position.

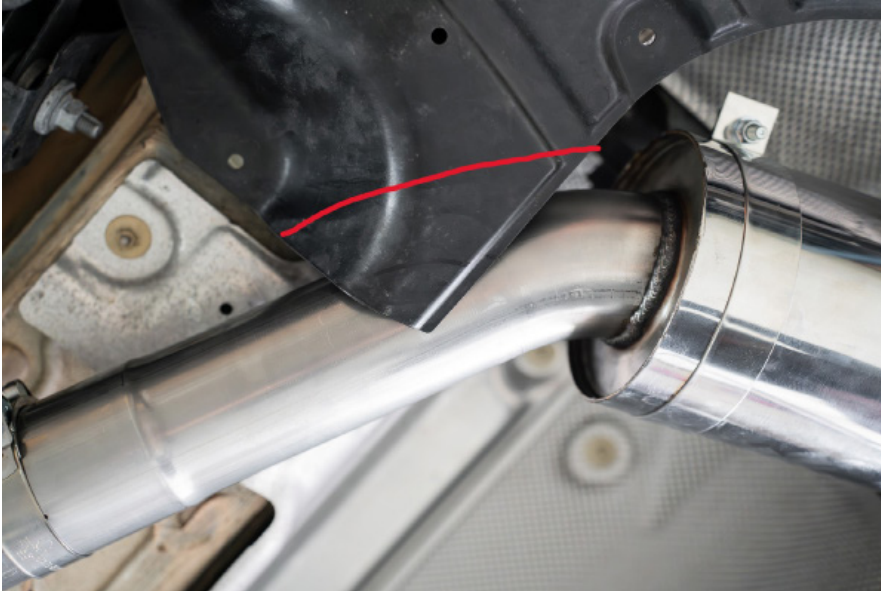
The second image shows the rear bumper having had the area removed.



STAY CONNECTED TO RED POWER.

<b>Car</b>	Toyota Supra A90 3.0T GPF Models	<b>Part No.</b>	STYS010
<b>Year</b>	2019-Current	<b>Fit Kits</b>	462FK
<b>Notes</b>	Where not supplied use original fittings.	<b>Features</b>	Pipe Diameter:- 80mm

Estimated Fitting Time: 90 Minutes



The undertray also requires trimming to clear the exhaust. The red line indicates the amount to be removed.

The second image shows the undertray having had the material removed.



STAY CONNECTED TO RED POWER.